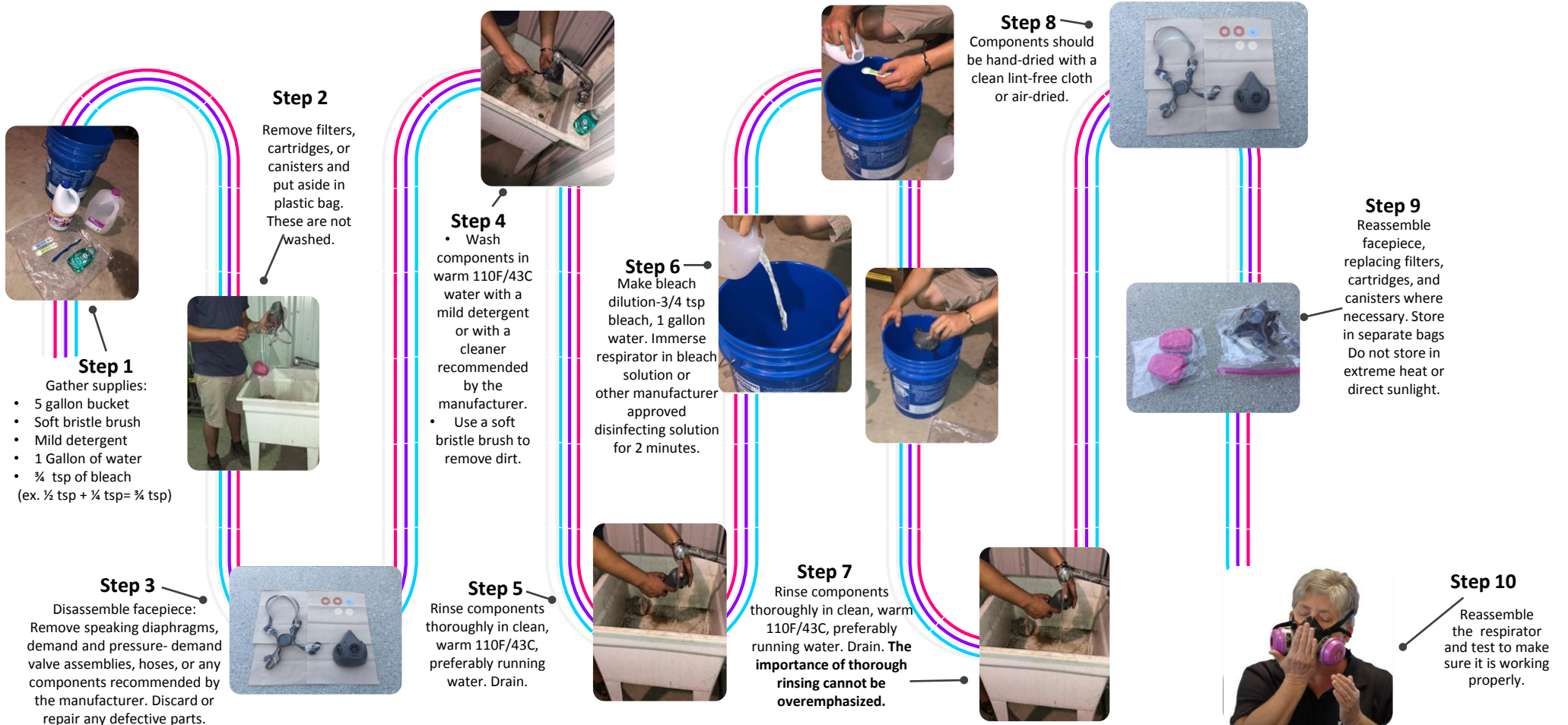


Training

Training must be presented in a way that the employee can understand and must include at least the following information:

- Why a respirator must be used
- What the respirator can/cannot do to protect the individual;
- How to properly inspect, put on, take off and use the respirator;
- How to check the seal of the respirator;
- How to use the respirator effectively in emergency situations, including situations in which the respirator doesn't work properly;
- How to recognize medical signs/symptoms that may limit or prevent the individual from using a respirator;
- How improper fit, usage or maintenance can reduce the respirator's ability to protect the individual;
- What the procedures are for maintenance and storage of the respirator; and,
- What the requirements are for Worker Protection Standard (WPS) and/or Occupational Safety and Health Administration (OSHA), as applicable

Respirator Cleaning



Storage

- Store clean respirator in air tight bag or container. Be sure respirator is dry before putting in bag or container.
- Store cartridges separately so as not to contaminate clean respirator.
- Store both away from sunlight, moisture, extreme cold, extreme heat and dust.
- Do not store respirators in tool boxes.
- Take special care with particulate (N95 respirators) not to store in a way that damages the shape of the respirator.

